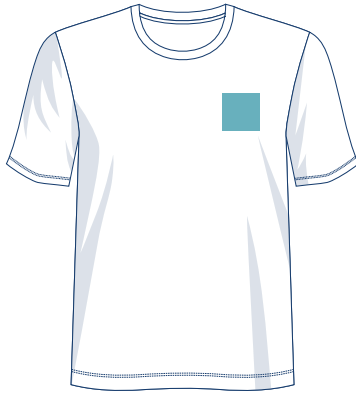


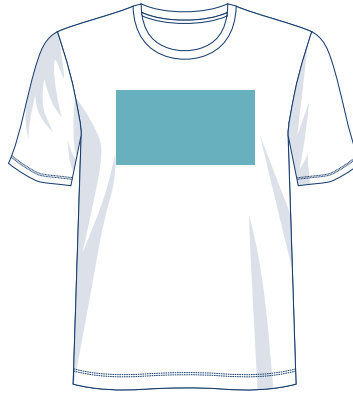
ART GUIDELINES

Screen Printing

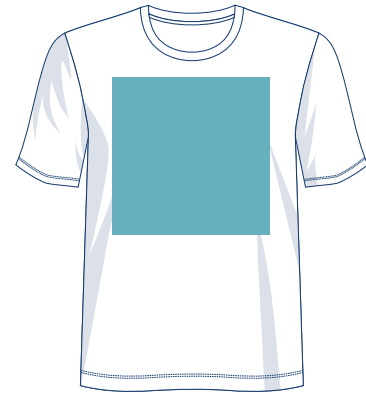
Standard Screen Print Locations



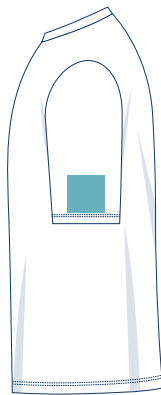
LEFT CHEST
4" down from collar
2.5"-5"w X 2.5"-5"h



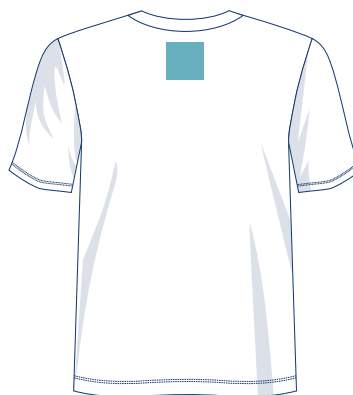
CENTER CHEST
2.5" down from collar
6"-10"w X 6"- 8"h



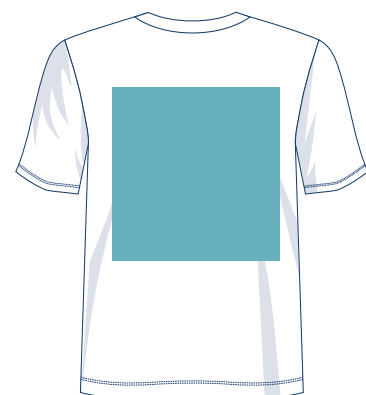
FULL FRONT
1.5" down from collar
12"w X 10"- 14"h



SLEEVE
1" from sleeve bottom
1"-4"w X 1"- 4"h



NAPE
1" down from collar
1"-4"w X 1"-4"h



FULL BACK
4" down from collar
10"-14"w X 6"- 15"h

Additional Locations & Dimensions:

| | Standard Width | Max Size | Placement |
|---|----------------|-----------------|--------------------------------------|
| Inside Tag | 2.5" | 4.5"w X 4.5"h | .5" down from collar |
| Long Sleeves | 3.5" | 3.5"w X 15"h | 6" from top of sleeve seam |
| Left or Right Thigh Pants Shorts Leg | 3.5" | 4"w X 4"h | 5" down from waistband, 1" from seam |
| Youth (Onesie) | 4" | 4.5"w X 8"h | 1" down from collar |
| Youth Shirt | 9" | 10-12.5"w X 12" | 2" down from collar |
| Tote Bags | varies | 10"w X 12"h | centered on bag |

Guidelines are for Reference Only



ART GUIDELINES

Embroidery

| | Standard Width | Max Size | Placement |
|---------------------------------------|----------------|-----------------|---|
| APPAREL | | | |
| Left or Right Chest | 3.5" | 4.5"w | based on type of garment (Mens, Womens, Youth) |
| Left or Right Sleeve (Short Sleeve) | 3" | 4"w | 1" up from sleeve bottom |
| Left or Right Cuff (Long Sleeve) | 1" | 2"w | varies by garment and/or above cuff/on cuff |
| Neck Back | 3" | 4"w | 1" down from collar |
| Left or Right Thigh (Shorts or Pants) | 3.5" | 4.5"w | varies by garment |
| HATS | | | |
| Front | 4" | 4.75"w X 2.25"h | centered on hat |
| Front Panel | 2.5" | 2.5"w X 2.25"h | centered in either Left or Right Panel |
| Side | 2.5" | 2.5"w X 1.5"h | varies by hat |
| Back | 3" | 3"w X 1.5"h | .25" up from seam - can be straight or arched |
| Buckets | 3" | 3"w X 1.5"h | varies by garment |
| Visors | 3" | 4"w X 1.25"h | varies by garment |
| Beanie (no cuff) | 3.5" | 4.5"w X 3"h | .5-1" up from bottom of beanie |
| Toboggan (on cuff) | 3.5" | 4.5"w X 2.25"h | centered on cuff |
| MISC | | | |
| Bags | 3" | 4"w | varies by bag |
| Blankets or Towels | 4" | 5"w | typically in the corner on an angle |
| Aprons | 4" | 5"w | varies by garment |

- All letters and numbers must be a minimum of .25" in height to be legible.
- Final dimensions and placement will be based upon actual garment.

Guidelines are for Reference Only

